

# NEXSTA™

YKK  
ap®

The Further Improvement of  
Comfortable Living Space



# CONTENTS

CONTENT .....	01
PERFORMANCE .....	03
GREEN BUILDING .....	05
INTEGRATED MANUFACTURING CHART .....	06
NEXSTA SERIES LINE UP .....	07

SLIDING .....	09
TOP HUNG .....	15
CASEMENT .....	17
BUTT HINGED DOOR .....	19
FOLDING DOOR TERRACE TYPE .....	21
VENTILATION DOOR .....	25
FIXED .....	27
BOVENLICHT AND LOUVER .....	28
LATTICE .....	29



## Perfectly evokes the spirit of refined elegance

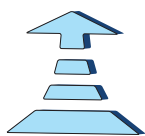
Once again, NEXSTA invigorates the function as well as heightening the impact of exceptional convenience. Comfortable living space never be the same thanks to the further improvement from NEXSTA. Moreover, NEXSTA is exclusively developed based on consumers high expectation and pay tribute to every single details namely environment, weather condition, climate, life-style, culture, present situation and others

# NEXT STAGE PRODUCTS for ASEAN





**Quality assurance by the design with special tested, safe performance and also proposed parts**



**BASIC PERFORMANCES**

Quality Assurance by Tested Performance



**UNDERSTANDABLE FUNCTIONS**

Operability  
Safety and Relief  
Crime Prevention



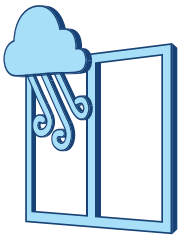
**FLEXIBILITY**

Environmental Friendly  
Applied to Large Opening  
and High-Rise



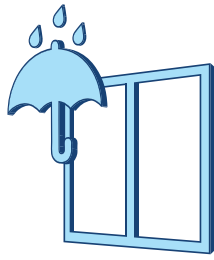
# PERFORMANCE

## Basic Performance



### STRUCTURAL (WIND LOAD)

Wind pressure resistant up to **1600 Pa** with deflection L/125 and L/175



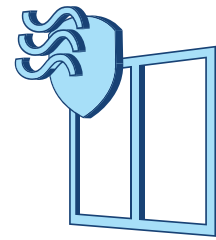
### WATER TIGHTNESS

Isobaric System adaptable and watertight from outside within **250 - 300 & 350 Pa** and **500 Pa** for Fixed



### SOUND INSULATION

Sound proof and promote energy saving  
**Grade T-1(-25 dB)** and **T-2 (-30 dB) (JIS)**, **Rw 24~30 (ISO)**



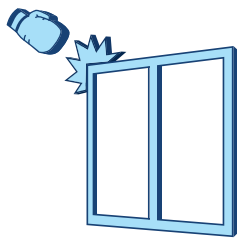
### AIR INFILTRATION

Dust-free and airtight system  
**Grade A-4 (JIS)**



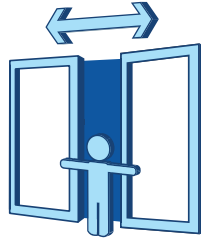
### OPEN-CLOSE TEST

Surpass the **30,000 cycles** of open-close test



### IMPACT RESISTANCE

Resistant to impact loads up to **30 kg Sand Bag** and **170 mm Drop Height**



### OPENING FORCE

Smooth to operate - easy for children  
**< 50 N (5 kgf)**



### DOUBLE GLAZING

Double glass to promote energy saving  
**Max 6 + A6 + 6 mm Glass Groove**  
**18 & 22 mm:** Sliding  
**24 mm:** Fixed, Casement, etc  
**26 mm:** Folding Door Terrace Type, and others

## Structural Wind Load

Using NEXSTA guarantees peace of mind in landed house as well as condominium (strength verification based on each project condition)



### House

10 m [3 Stories]



### Condominium

150 m [50 Stories]

Indonesia : SNI 03-0573  
House : 503 Pa Condominium : 1211 Pa (160 m)  
*Environmental Condition Level 2 V=30m/s*  
*Category III : The state there are many obstacles on the ground surface : small town, large suburban areas.*

Malaysia : MS 1553  
House : 616 Pa, Condominium : 1308 Pa  
*Basic wind speed Vs = 33.5 m/s (Kuala Lumpur)*  
*Category 3 : Terrain with numerous closely spaced obstructions 3.0 to 5.0 m high such as areas of suburban housing.*

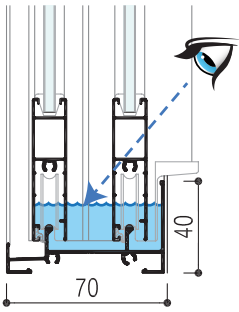
Vietnam : TCVN 2737  
House: 797 Pa, Condominium : 1299 Pa  
*Wind pressure regions W=830 N/m<sup>2</sup> (Ho Chi Minh City)*  
*Terrain type B : Relative open terrain on which there is a few of sparse obstruction not exceeding 10m in height.*

Thailand : DPT 1311-50  
House: 425 Pa, Condominium: 1460 Pa  
*Reference wind speed V=25 m/s (Bangkok)*  
*Terrain type B = suburban or areas with tall trees densely, center of small city.*

Setting Basic Wind Load for NEXSTA at 1600 Pa based on the criteria of 4 countries. Positive pressure at building facade with many windows.

# Water Tightness

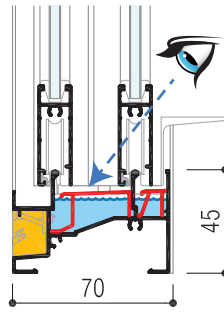
## Common Sliding



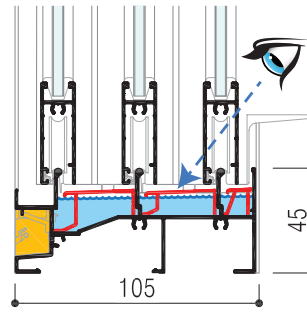
180 Pa and 220 Pa

During the rain, water will be accumulated in Bottom Sill, and the water could be seen from inside because of the adopted water head system

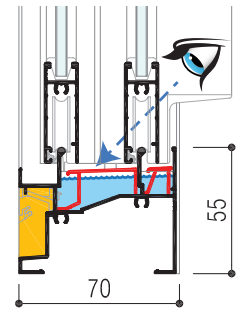
## NEXSTA Sliding



250-300 Pa



250-300 Pa

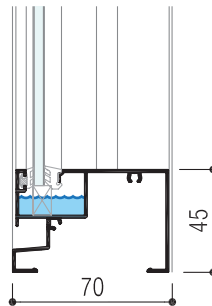


350 Pa

High Performance Bottom Sill

Bottom Sill with cover that makes the water could not be seen up to 200 Pa level

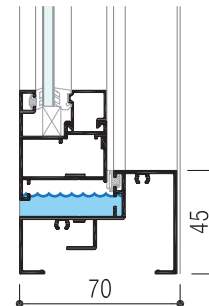
## NEXSTA Fixed



500 Pa

Adopting Isobaric System as an improved system to substitute the use of drain valve

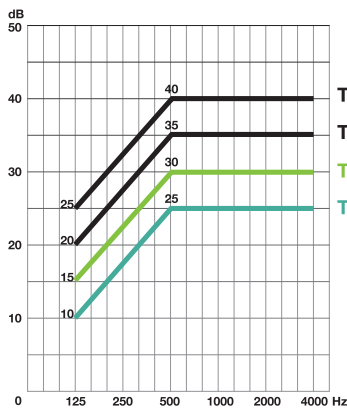
## NEXSTA Top Hung & Casement



350 Pa

Adopting Isobaric System

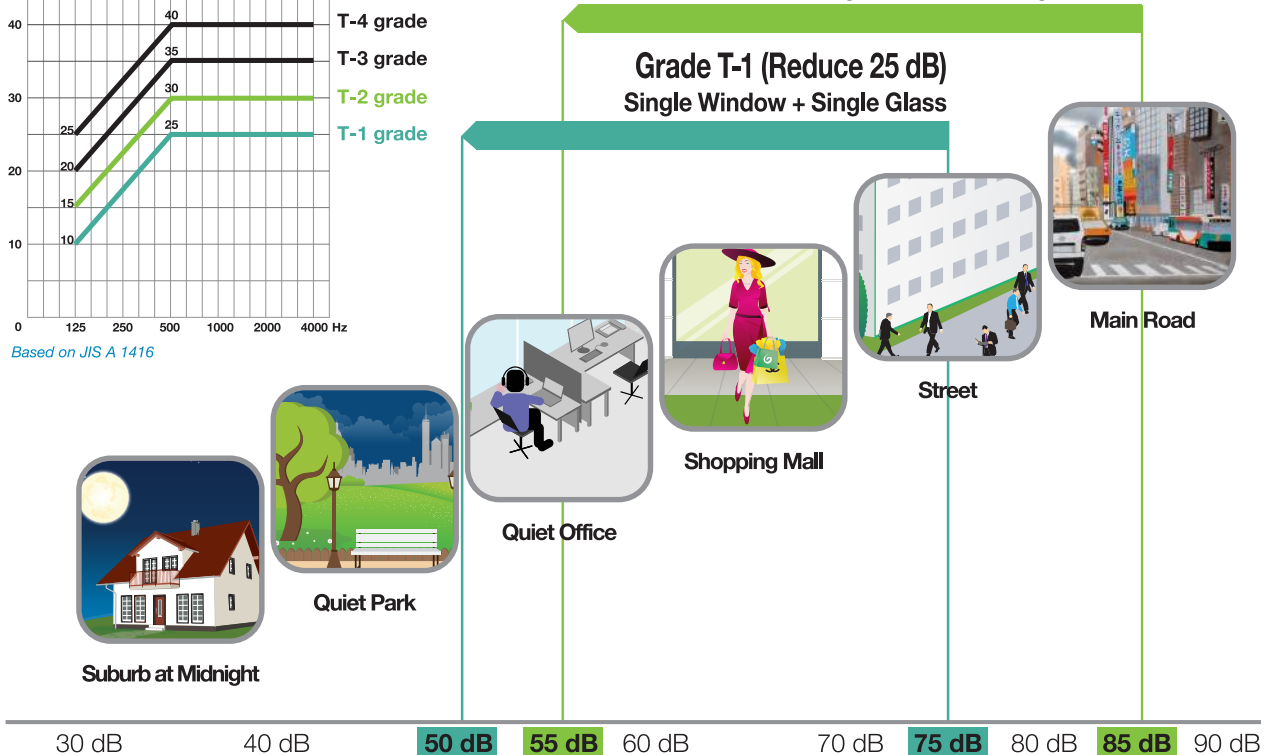
# Sound Insulation



Based on JIS A 1416

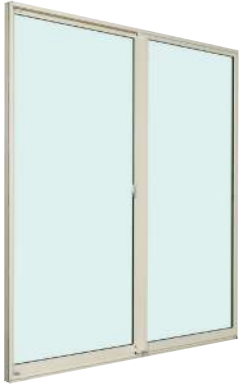
Grade T-2 (Reduce 30 dB)  
Single Window + Single Glass

Grade T-1 (Reduce 25 dB)  
Single Window + Single Glass



## Green Building Concept

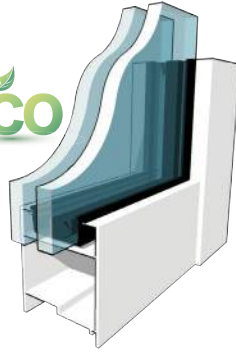
Modern living that adopts pro green manner means practical, sensible and enable to obtain great saving on energy. Thus energy consumption shall be moderately minimized by preserve natural lighting and thermal reduction that would promote healthy environment



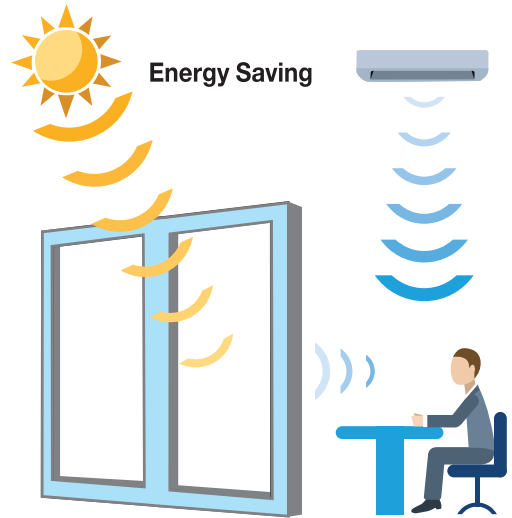
Window



ECO



Double Glass

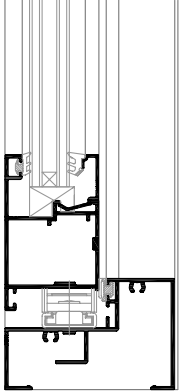


Energy Saving

## Double Glazing

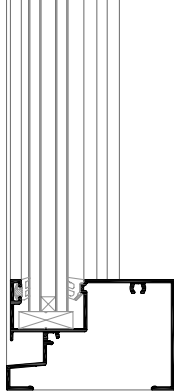
### NEXSTA70

Casement, Top Hung and Door  
Glass Groove: 24 mm



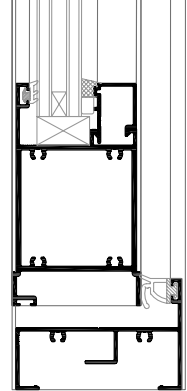
### NEXSTA70

Fixed  
Glass Groove: 24 mm



### NEXSTA70LS

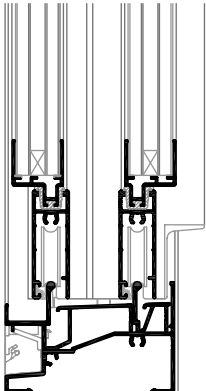
Casement, Top Hung and Door  
Glass Groove: 26 mm



(Inside) Gasket  
(Outside) Sealant

### NEXSTA70 and 70LS

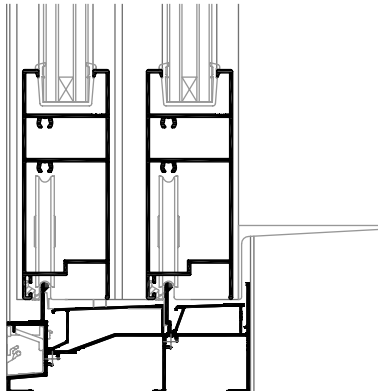
Sliding A, B, C, D, SA and SB  
Glass Groove: 18 mm



Glass Groove 9 mm and 14 mm  
Use attachment

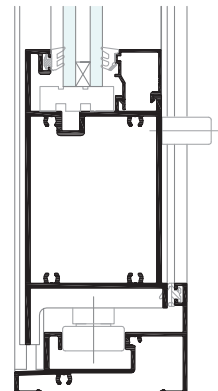
### NEXSTA100LS

Sliding FA and FB  
Glass Groove: 22 mm



### NEXSTA70FDT

Folding Door Terrace Type  
Glass Groove: 26 mm

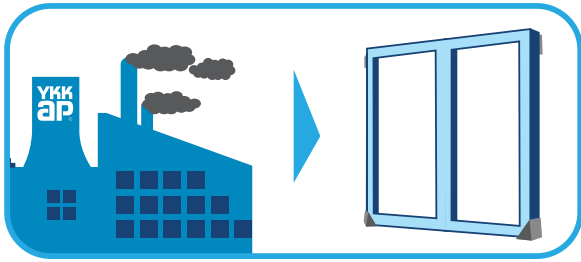




# INTEGRATED MANUFACTURING CHART

## Finished Goods

### Manufacture and Assemble



All product is manufactured and assembled under integrated production process with international standards compliance. Extrusion dies, aluminium billet, extrusion profiles, coating and fabrication process are all done integrately in YKK AP factory

### Delivery



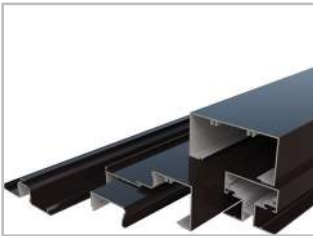
The finished goods deliver to particular construction site

### Installation



Finally the sash installation is done by YKK AP Distributor and fully inspected by YKK AP. Installation training for distributor is also managed by YKK AP

#### 1. Aluminium Profiles



Alloy designation and temper for extrusion is A6063S-T5. Coating are mainly anodized composite film and polyester powder coating. The design meets JIS H 4100, JIS H 8602, AAMA 2604 standards regarding aluminium and aluminium alloy extruded shapes and finishing

#### 3. Fabrication and Assemble



Aluminium profiles are fabricated based on JIS A 4702 and JIS A 4706 standards to produce product with great performance

#### 5. Land and Sea



We are able to move the goods based on site precondition and pre-planned itinerary by land to match with goods delivery plan

#### 6. Window Installation



Window is installed by distributor with training and quality control from YKK AP. The procedure requires dimension checking, opening check, hoisting, carrying and laser level adjustment as well as sill basic line marking

#### 2. Parts



High performance of main parts are developed by carefully studying operation component, operability and design. All is produced in YKK AP factories



The assembling process has utilized JIS A 4702 and JIS A 4706 standards



YKK AP also manage and administer to deliver the goods by sea upon prior terms and conditions

#### 4. Testing and QC



Furthermore, the strictest quality control applies to all levels ensuring all applications run smoothly. In order to control the quality, testings are conducted based on AAMA, ASTM, JIS, MS, SNI, TCVN, DPT and ISO 9001 standards

#### 7. Glass Installation



After the sash installation and finishing, the glass fits precisely onto the frame

## BASIC PRODUCTS

### NEXSTA 70



Subtly inspired by the resolutely creation of modern architectural and lifestyle, NEXSTA defines an outstanding quality in the entire range

The complete series of NEXSTA superior product variants are gradually improved and advanced from the previous series that asserts the functional needs of having the most comfortable living space

Both product categories obtain higher standard as compared to others. A sense of well-being is now within reach. NEXSTA reveals the quintessence of style and performance above all else

#### Variation

##### [Frame Depth 70 mm]

- Sliding 2 and 4 Leaves, 2 Tracks
- Fixed
- Fixed R-Type
- Top Hung
- Single and Double Casement
- Aluminium Louver
- Bovenlicht Square and Round Type
- Butt Hinged door A Type (Single and Double Swing) Inswing and Outswing

##### [Frame Depth 105 mm]

- Sliding 3 and 6 Leaves, 3 Tracks



# VALUE PRODUCTS

## NEXSTA70LS

### Variation

#### [Frame Depth 70 mm]

- Sliding 2 and 4 Leaves, 2 Tracks (D and SB Type) [H ≤ 3000 mm]
- Top Hung LS Type with Butt Hinge [H ≤ 3000 mm]
- Single and Double Casement LS Type with Butt Hinge [H ≤ 3000 mm]
- Butt Hinged Door B Type (Single and Double Swing) Inswing Type and Outswing Type

#### [Frame Depth 105 mm]

- Sliding 3 and 6 Leaves, 3 Tracks (D & SB Type) [H ≤ 2700 mm]



## NEXSTA100LS

### Variation

#### [Frame Depth 100 mm]

- Sliding 2 and 4 Leaves, 2 Tracks (FA and FB Type) [H ≤ 3000 mm] for Condominium and [H ≤ 3500 mm] for House

#### [Frame Depth 150 mm]

- Sliding 3 and 6 Leaves, 3 Tracks (FA and FB Type) [h ≤ 3000 mm] for Condominium and [h ≤ 3500 mm] for House



## NEXSTA70FDT

### Variation

#### [Frame Depth 70 mm]

- Folding Door Terrace Type (High-Strength Type) [H ≤ 3000 mm] for Condominium and [H ≤ 3500 mm] for House



## NEXSTA70VD

### Variation

#### [Frame Depth 70 mm]

- Ventilation Door

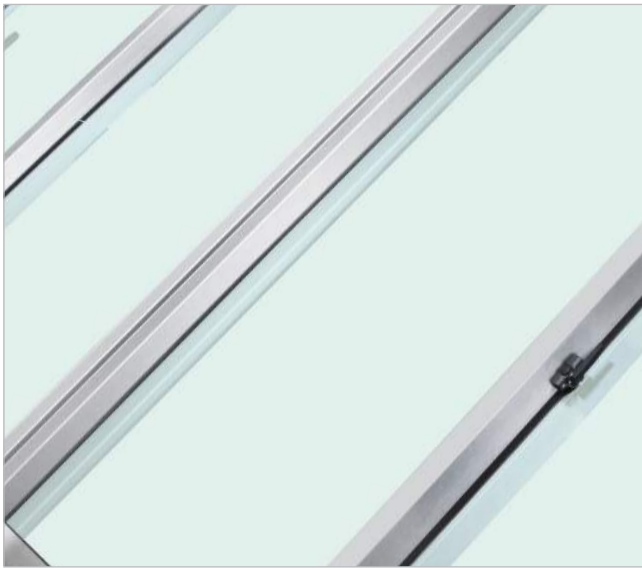




# SLIDING

## NEXSTA70 & NEXSTA70LS

With easy and smooth operation, this flush handle perfectly match with flat design



## NEXSTA100LS



### STRUCTURAL (WIND LOAD)

1600 Pa Deflection L/125 and L/175



### WATER TIGHTNESS

250 - 350 Pa



### AIR INFILTRATION

Grade A-4(JIS)



### SOUND INSULATION

T-1 (-25 dB) (JIS)  
T-2 (-30 dB) (JIS)\*  
Rw 24 - 30 (ISO)



### DOUBLE GLAZING



## Variation

### Sliding 2 Leaves



Single Sliding

2 Tracks for 2 and 4 Leaves

NEXSTA70 and 70LS  
NEXSTA100LS

### Sliding 4 Leaves



Two Ways Single Sliding

### Sliding 3 Leaves



3 Tracks for 3 and 6 Leaves

NEXSTA70 and 70LS  
NEXSTA100LS

### Sliding 6 Leaves



## NEXSTA70

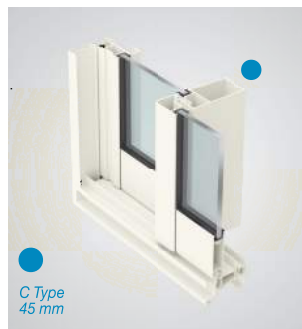
Frame Depth 70 mm



A Type  
25 mm



B Type  
25 mm



C Type  
45 mm



Slim SA Type  
25 mm

## NEXSTA70 and 70LS

Frame Depth 70 mm Large Size Sliding



D Type  
60 mm



Slim SB Type  
45 mm

## NEXSTA100LS

Frame Depth 100 mm Large Size Sliding



Flat FA Type  
65 mm



Flat FB Type  
65 mm

\* High Sound Insulation Type

## Standard Parts

### • Crescent with Lock (70 and 70LS)



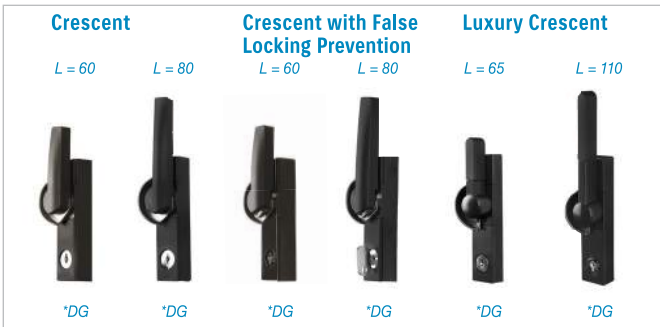
### • Flush Handle Lock (100LS)



## Optional Parts

### • Crescent with Key

Available 8 types of Keys



### • Luxury Crescent with Lock



### • Crescent with False Locking Prevention



### • Flush Handle



### • Flush Handle Lock with Key



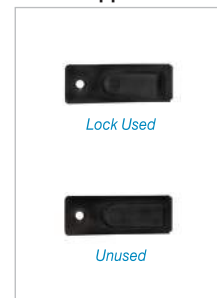
### • Large Handle Lock



### • Luxury Large Handle Lock



### • Support Lock



### • Large Handle

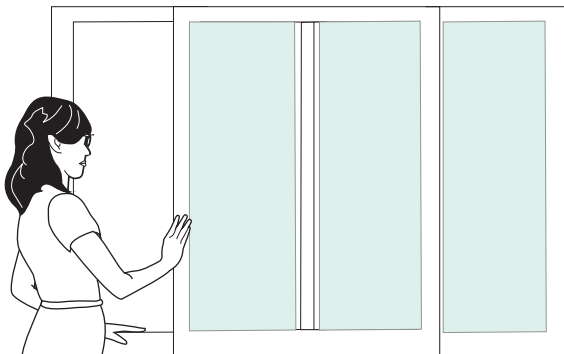


### • Support Large Handle and Support Flush Handle



\*DG & YK : Black YW: White YS: Silver

## Sliding Window



When using sliding window, there will be no danger of panels flapping by strong wind. Efficient ventilation is also made possible by opening the window panels. No space required in the structure since the insect screen can be installed on the window frame

### Operability

#### Profile Handle (Standard) NEXSTA70 and 70LS

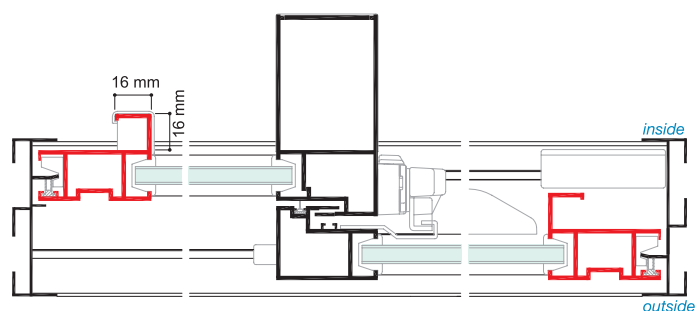
The overall length is L-shape that considered to be as the hand-holder (B, C, SA, D and SB Type). Groove shape is also considered as the hand-holder (C,D, and SB Type)



Inside Handle



Outside Handle



### Support Handle

Support handle is an optional item to open the window with less force. By tilting the handle, the roller kicks the frame and you could easily and smoothly open it with no fuss

#### Support Flush Handle (Option)

Small handle (but wide enough for easy grasp) to consider blind use inside the room



Handle position upon opening the door



Normal Position

#### Support Large Handle (Option)

Easy to grasp

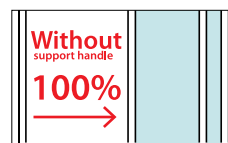
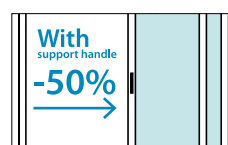


Handle position upon opening the door



Normal Position

#### Opening Force Comparison



#### Flush Handle (Option)

Enhance the operation by turning the flush handle at the outside to ease open-close operation as optional handle



#### Large Handle (Option)

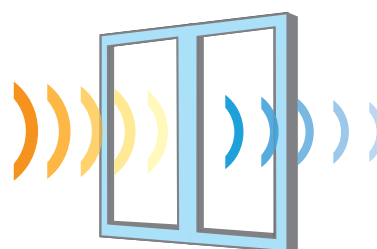
Easy operation with large handle



### Relief

#### High Sound Insulation Type

With high-insulation parts (weather strip, wind barrier, cap) and with 8 mm single glass, Sliding C, SB, d, FA and FB type able to reduce 30 dB (JIS T-2 grade)





■ Safety

Safety Cap



Inside upper cap



Outside bottom cap

This is the standard setting. It will prevent any harm that might occur

Inner Stopper



Upper Inner Stopper

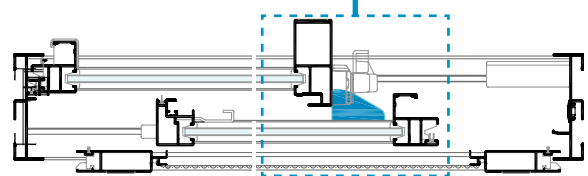
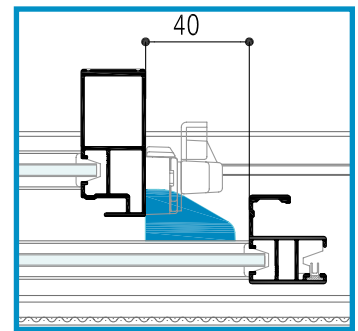


Bottom Inner Stopper

This is the standard setting. It is useful to prevent injury while open

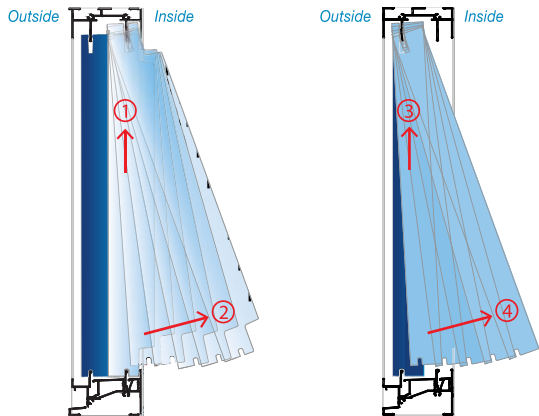
Type and Stopper Position

Type A: (none)  
Type B, C, SA, D, & SB: Top Only  
Type FA & FB: Top & Bottom



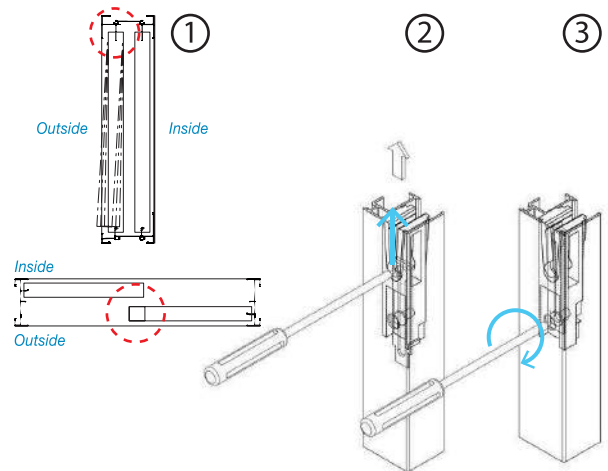
Installation Method Fully from Inside

Detach the inner frame safely from inside to do the installation and maintenance



Locking Mechanism to Prevent Jumping Track

Latch is set at the top of inner frame as the standard setting to prevent jumping track



■ Security

Crescent with False Locking Prevention (Option)

With this setting the function of lock will work appropriately



Support Lock (Option)



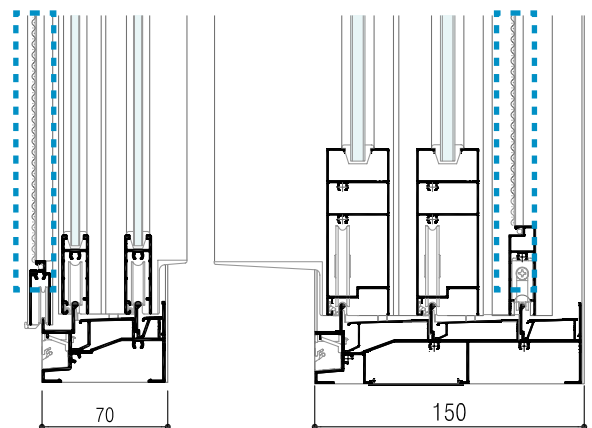
Improved the security points by setting double lock system: Crescent and support lock

■ Insect Screen

Sliding 2 Tracks

Sliding 3 Tracks

This setting will protect from any insect disturbance and promote clear view



Outside (MH < 2550 mm)

Inside (MH < 3435 mm)

# SLIDING

## Large Opening and Wider View

To obtain the wide opening window, size limitation can be solved with NEXSTA sliding type



### NEXSTA70LS and NEXSTA100LS

#### HOUSE

Embracing the positive vibe of vitality. Capture the airy feeling and evokes a sunny day with a light breeze it's all there, thanks to the element of 6 leaves variants



Max Size (70LS): W 6000 mm x H 3000 mm and (100LS): W 6000 mm x H 3500 mm

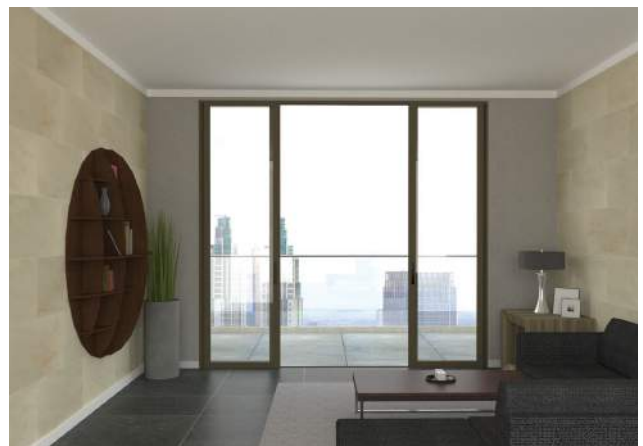


#### CONDOMINIUM

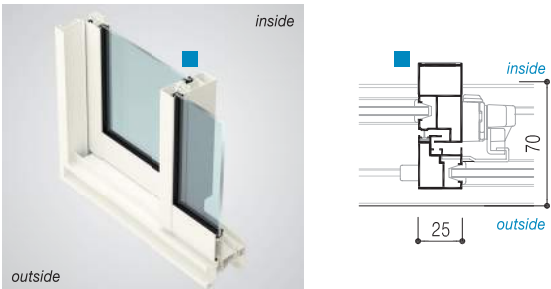
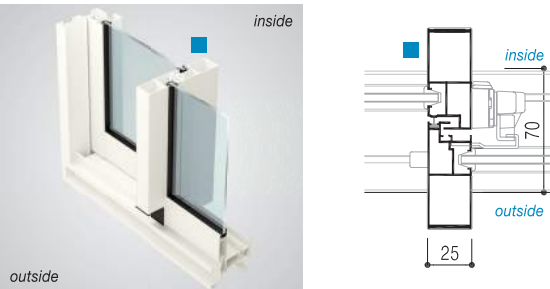
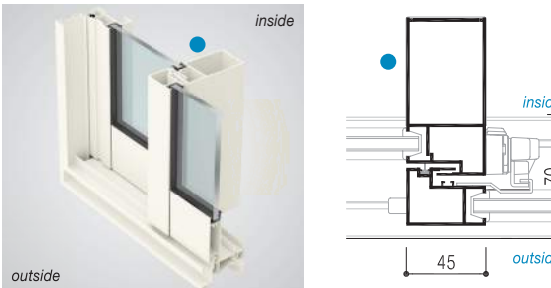
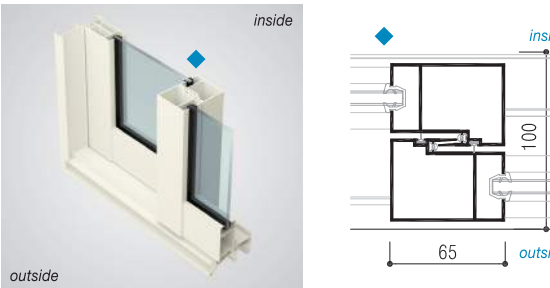
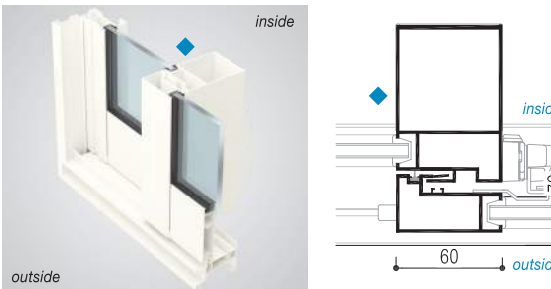
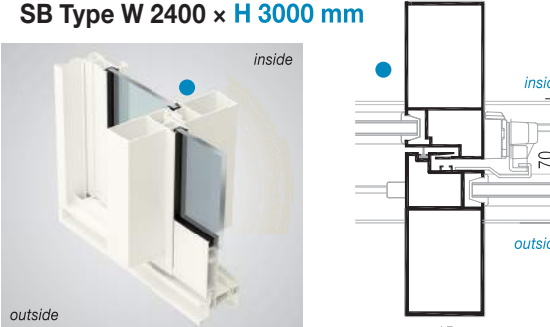
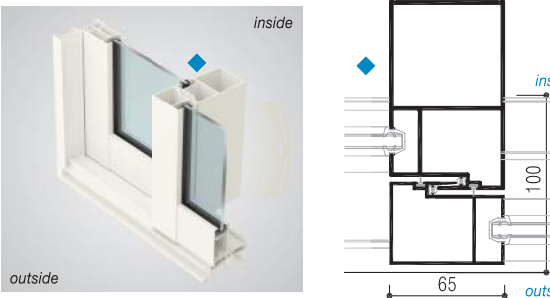
Zesty freshness of radiant view. It's the perfect illustration of masterly stroke of elegance that stands apart thanks to 4 leaves variants. Discover a new horizon by altering your point of view



Max size (70LS): W 4800 mm x H 3000 mm and (100LS): W 4800 mm x H 3000mm



■ Considerable Design

Standard Design	Proposed Design
<p>• Window A Type W 2000 × H 1200 mm</p> 	<p>• Window with Slim Design SA Type W 2000 × H 1600 mm</p> 
<p>• Terrace Door C Type W 2400 × H 2400 mm</p> 	<p>• Terrace Door with Flat Design FA Type W 2400 × H 1900 mm and W 2400 × H 2300 mm</p> 
<p>• Large Size Terrace Door D Type W 2400 × H 2600 mm</p> 	<p>• Large Size Terrace Door with Slim Design SB Type W 2400 × H 3000 mm</p> 
<p>• Large Size Terrace Door with Flat Design FB Type W 2400 × H 3000 mm and W 2400 × H 3500 mm</p> 	

Flat design : aesthetically pleasing and seamlessly adjacent with the wall  
Slim design : sublimely lean and more sturdy

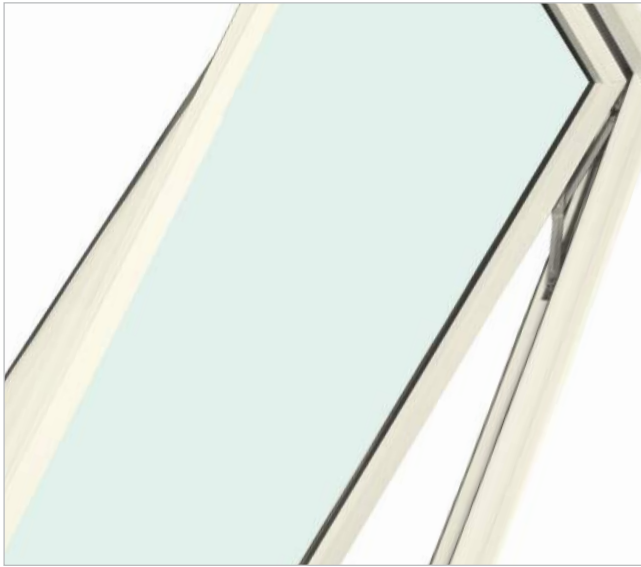


# TOP HUNG

## NEXSTA70

## NEXSTA70LS

Upon installation in the appropriate manner, Top Hung can provide natural light, good ventilation and protect your home against moisture without compromising privacy



**STRUCTURAL (WIND LOAD)**

1600 pa  
Deflection  
L/125 and L/175



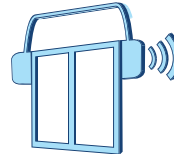
**WATER TIGHTNESS**

350 Pa



**AIR INFILTRATION**

Grade A-4(JIS)



**SOUND INSULATION**

T-1 (-25 dB) (JIS)  
T-2 (-30 dB) (JIS)  
Rw 24 - 30 (ISO)



**DOUBLE GLAZING**



### Variation

#### NEXSTA70



A Type



B Type

#### NEXSTA70LS



LS Type

### Standard Parts

#### Cam Latch Handle A & B Type



\*DG



\*YW

#### Multipoint Lock Handle B & LS Type



\*DG



\*YW

#### Arm Stopper A & B Type, H >1300 mm



\*YS



\*YS

#### Friction Stay A & B Type



\*YS



\*YK, YW

### Optional Parts

#### Luxury Cam Latch Handle A & B Type



\*DG



\*YW

#### Luxury Multipoint Lock Handle B & LS Type



\*DG



\*YW

#### Luxury Multipoint Lock Handle with Key B & LS Type



\*DG, YW

#### Safety Friction Stay A & B Type



\*YS

\* DG & YK : Black YW : White YS : Silver

**Safety and Security**

**Luxury Multipoint Lock Handle with Key (Option)**

Provide the handle with keys as the most preferred way in condominium concerning security matter



Available 8 Types of keys

**Operability**

**Handle**

The window panes can be closed perfectly for your safety



Multipoint Lock Handle  
[70: B Type and 70LS: LS Type]



Cam Latch Handle  
[70: A and B Type]

The above handle is also available for Casement

**Safety**

**Arm Stopper**

When the window is open wide, the stopper is set up to prevent the window flapping by strong wind



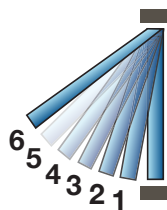
**Friction Stay**

Friction stay is set standard for safety



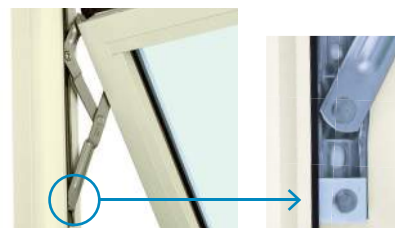
**6 Step Arm Stopper A & B Type (Option)**

Enable to adjust the opening angle until 6 levels to control the air flowing



**Safety Friction Stay (Option)**

This type from safety features is to prevent falling



**Double Hung Insect Screen**

Possible to retrofit with Double Hung Insect Screen. To get the air ventilation and insect prevention as well, open the window, close the bottom insect screen leaf possible to retrofit direct to wall or at the sash frame



This insect screen is also can be used for Casement

**Design**

**Available Handle Variation**

Multipoint Lock Handle



Cam Latch Handle



Luxury Multipoint Lock Handle

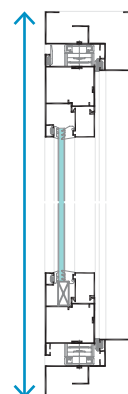


Luxury Cam Latch Handle



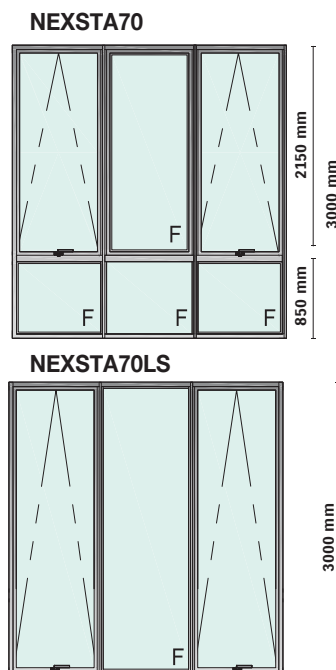
**Flat Design**

The glass is flat aligned with front side of window



**Large Opening**

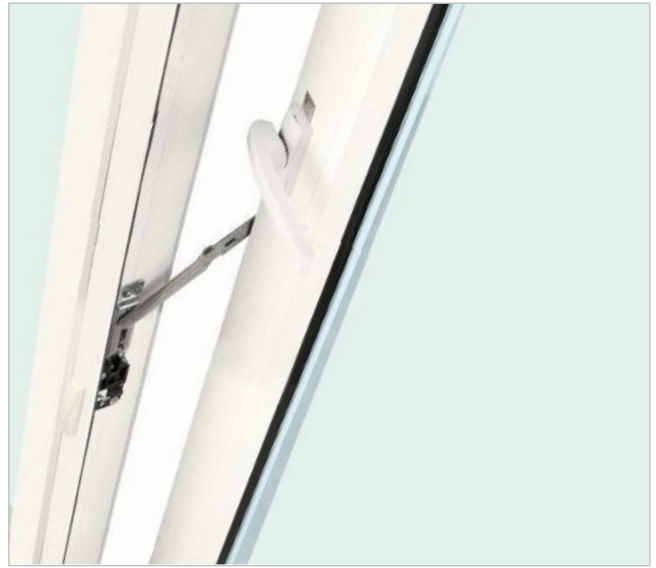
Composite window using NEXSTA70 needs transom which can be proposed to NEXSTA70LS (without transom) with full height and wider view



## NEXSTA70

Upon installation in the appropriate manner, Casement can provide natural light, good ventilation and protect your home against moisture without compromising privacy

## NEXSTA70LS



**STRUCTURAL (WIND LOAD)**  
1600 Pa  
Deflection  
L/125 and L/175

**WATER TIGHTNESS**  
350 Pa

**AIR INFILTRATION**  
Grade A-4(JIS)

**SOUND INSULATION**  
T-1 (-25 dB) (JIS)  
T-2 (-30 dB) (JIS)  
Rw 24 - 30 (ISO)

**DOUBLE GLAZING**  
ECO

### Variation

#### Single Casement

NEXSTA70  
NEXSTA70LS  
(Right Hand, Left Hand)



#### Double Casement

NEXSTA70  
NEXSTA70LS



### Standard Parts

#### Handle

Cam Latch Handle  
A and B Type



Multipoint Lock Handle  
B and LS Type



Butt Hinge [Aluminium]  
LS Type



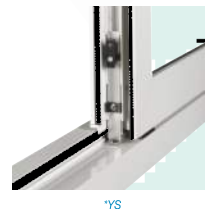
Safety Stopper  
A, B and LS Type



Friction Stay  
A and B Type



Flush Bolt



### Optional Parts

Luxury Cam Latch  
Handle  
A and B Type



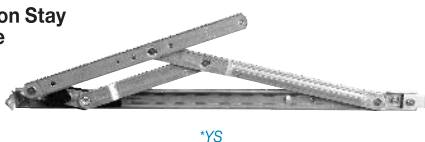
Luxury Multipoint  
Lock Handle B  
and LS Type



Luxury Multipoint  
Lock Handle with  
Key B and LS Type



Safety Friction Stay  
A and B Type

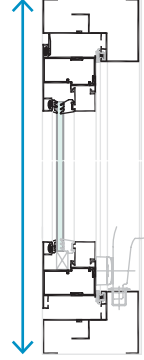


\*DG & YK : Black YW: White YS: Silver

■ Design



**Clear Design**  
Clear design with no muntin for Double Casement



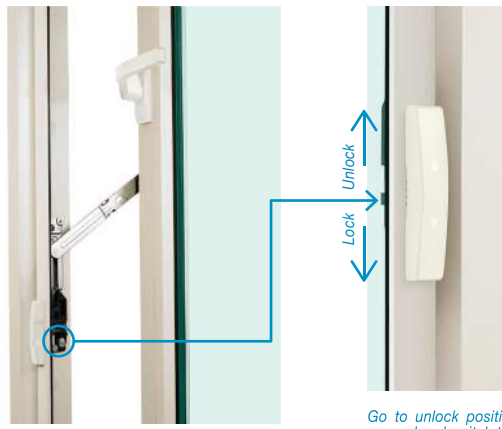
**Flat Design**  
The glass is flat aligned with front side of window frame

■ Safety

Safety stopper restricts the opening to less than 110 mm, to avoid unexpected accidents by children



Unlock position



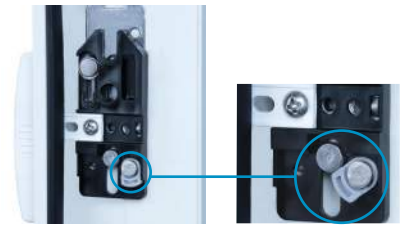
Lock position

Unlock  
Lock

Go to unlock position by moving upward and switch to lock position by moving downward.

**Child Lock**

Prevent children from releasing the safety stopper



Locked

■ Large Opening

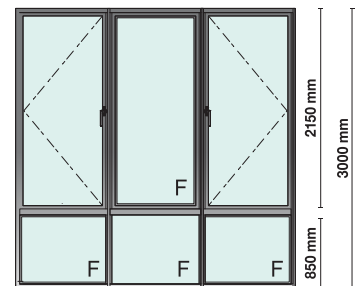
**Friction Stay**

Enables the panel to be opened to 90°, cleaning the glass from indoor can be done easily and safely

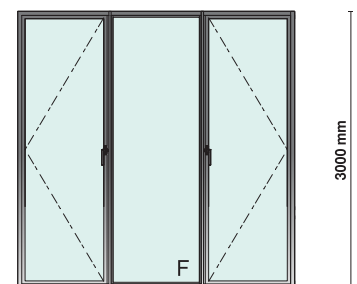


Composite window using NEXSTA70 needs transom which can be proposed to NEXSTA70LS (without transom) with full height and wider view

**NEXSTA70**

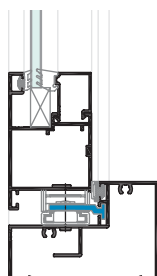


**NEXSTA70LS**



**Safety Friction Stay**

Friction Stay to prevent frame falling as an optional setting





# BUTT HINGED DOOR

## NEXSTA70

## NEXSTA70LS

You can always count on this product for its high performance and double glazing that brings positive impact as it is environmental-friendly



**STRUCTURAL (WIND LOAD)**

1600 Pa  
Deflection  
L/125 and L/175



**WATER TIGHTNESS**

350 Pa



**AIR INFILTRATION**

Grade A-4(JIS)



**SOUND INSULATION**

T-1 (-25 dB) (JIS)  
T-2 (-30 dB) (JIS)  
Rw 24 ~ 30 (ISO)

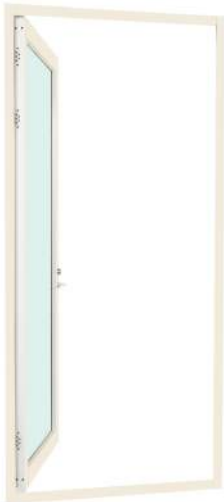


**DOUBLE GLAZING**



### Variation

**Single Swing**  
NEXSTA70  
NEXSTA70LS



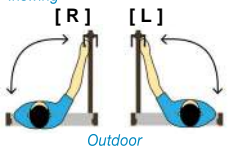
**Double Swing**  
NEXSTA70  
NEXSTA70LS



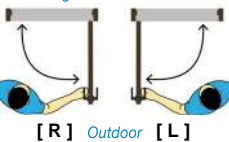
NEXSTA70 A Type [DT 36 mm]  
NEXSTA70LS B Type [DT 52 mm]

**Single Swing**

Inswing

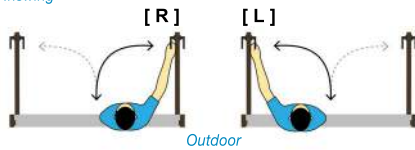


Outswing

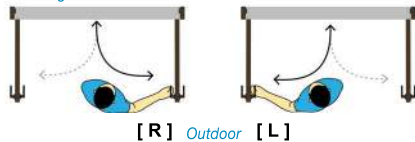


**Double Swing**

Inswing



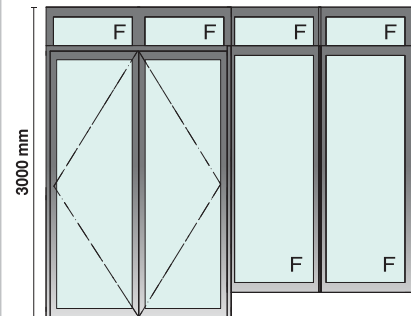
Outswing



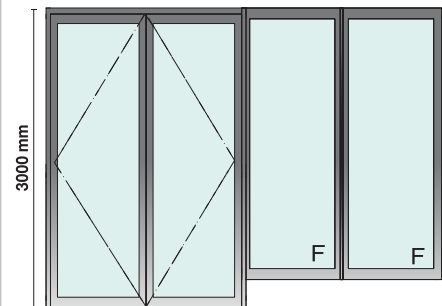
### Large Opening

Composite window with NEXSTA70 (needs transom) can be proposed to NEXSTA70LS (without transom) with full height and wider view

#### Standard Combination



#### Large Size



## Standard Parts

### Lever Handle Lock



Key Variation:  
 (Outside) — None  
 (Inside) — Thumb Turn  
 Cylinder Key — Thumb Turn  
 Cylinder Key — Cylinder Key

### Flush Bolt Double Swing Door



\*DG, YW Inside

### Butt Hinge [Aluminium]



\*DG, YW, inside

\*DG, YW, outside

### Safety Cap



\*DG, YW, upper cap

\*DG, YW, bottom cap

## Optional Parts

### Sub Lock



\*YS, inside

### Door Closer



\*YS, inside

### Bottom Sill [Outswing Only]



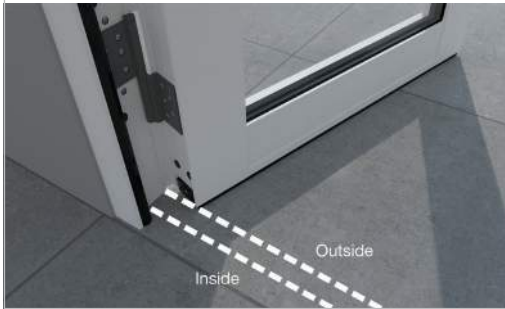
A Type

B Type

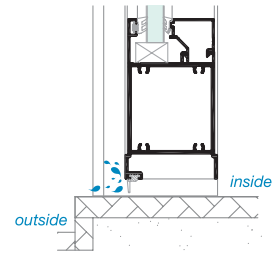
\*DG & YK: Black YW: White YS: Silver

## Reliable Performance

### NEXSTA (without Bottom Sill)



Have performance which benefits you from insect and dust prevention

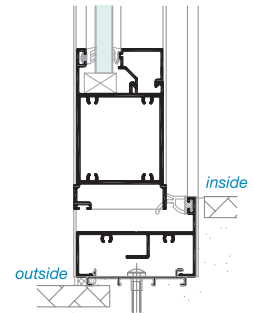


### NEXSTA (with Bottom Sill)

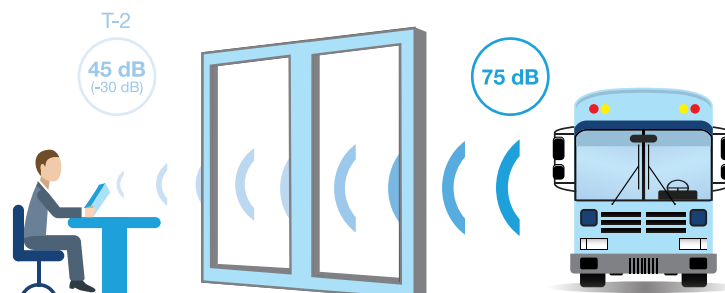


Outswing Only

Higher performance benefits such as water tightness, air infiltration, sound insulation, prevent insect and dust




Reduce the noise 25 dB (T-1) or 30 dB (T-2)




# FOLDING DOOR TERRACE TYPE

NEXSTA70FDT


Create Sense of Wide Opening by Unifying of Indoor and Outdoor



**STRUCTURAL (WIND LOAD)**  
1600 Pa  
Deflection  
L/125 and L/175



**WATER TIGHTNESS**  
350 Pa



**AIR INFILTRATION**  
Grade A-4(JIS)



**SOUND INSULATION**  
T-1 (-25 dB) (JIS)  
T-2 (-30 dB) (JIS)  
Rw 24 - 30 (ISO)



**DOUBLE GLAZING**  
ECO

■ **Large Opening and Wider View**

**HOUSE**

**Capture The Airy Feeling**

Because your house deserves something immaculate. Discover the spacious and airy feel based on the unify of indoor and outdoor. Feel free to unwind and chill afterwards



5 Leaves [4L1R]

W 6000 mm is maximum size for 6 leaves



**Condominium**

**Command The Best View**

The pleasure of amazingly breathtaking view from the top is yours. Enjoy the fantastic benefits from your personal spot, anytime, right here



4 Leaves [2L2R]





# FOLDING DOOR TERRACE TYPE

## Leaves and Opening Variation (Outside View)



### Standard Parts

#### Cremorne Handle



\*DG (Inside)

\*YW (Inside)

#### Hanger Roller



\*YS (Inside)

#### Hinge



\*DG, YW (Inside)

#### Safety Rubber



\*DG (Inside)

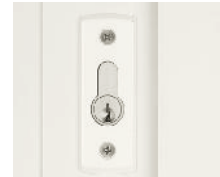
#### Inner Stopper



\*DG, YW (Inside)

### Optional Parts

#### Cylinder and Cremorne Handle



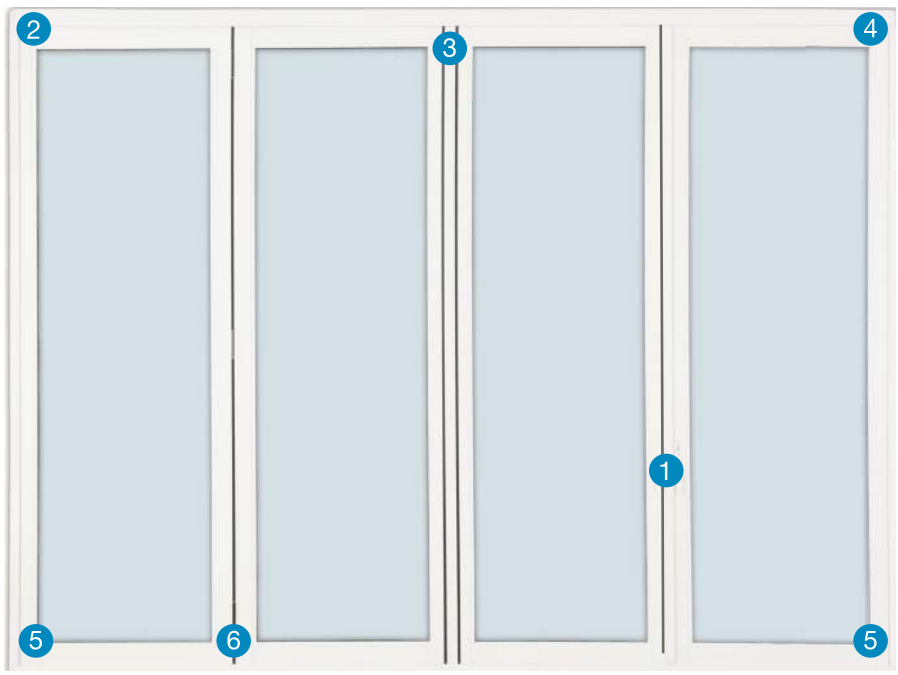
Cylinder (Inside)  
\*DG, YW



Cylinder and Cremorne Handle (Outside)  
\*DG, YW

\*DG & YK : Black YW: White YS: Silver





■ Design

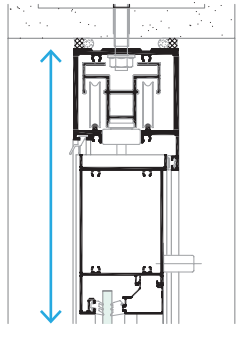
**Slim Design Handle**



**Flat Design Frame**



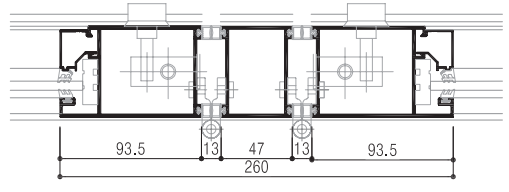
Inner frame in a line



■ Performance and Workability

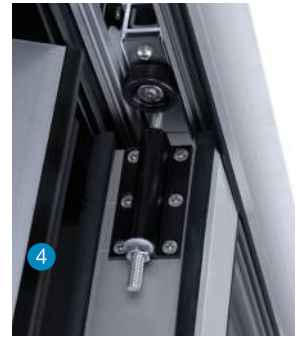
**High-Strength Inner Frame Setting**

Support large opening, support anti typhoon strength



**Hanger Roller**

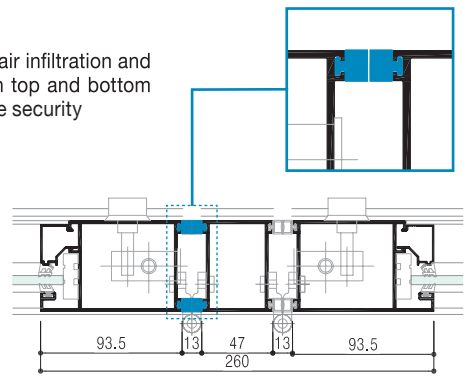
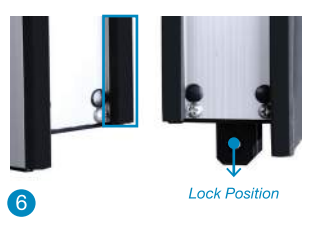
Ensure the smoothness and durable against heavy duty



■ Safety and Security

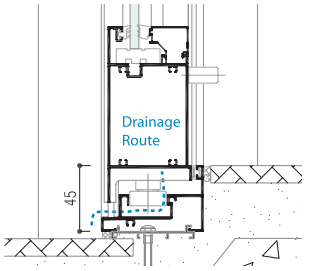
**Weather-Strip & Multipoint Lock**

Weather-strip is provided to ensure air infiltration and finger safety. The multipoint lock on top and bottom with one stroke ensure for your home security




**Weep Hole**

It will not be soaking wet and block the drainage thanks to weep hole. The standard Weep Hole is located at the far left and far right. The additional one is located at the center position depends on the whole width



■ Product Characteristic

<b>Glass Groove</b>	18 mm		Leaves Variation
	26 mm		Intermediate rail available
<b>Leaf Weight</b>	Maximum 90 Kg [1pcs door Leaf]		

■ Size Limitation (Per 1 Pcs Door Leaf)

<850 Pa>	<1600 Pa>
Deflection ≤ L/125	Deflection ≤ L/125
[DW] 1000 mm x [dh ] 3200 mm [DW] 800 mm x [dh ] 3500 mm	[DW] 1000 mm x [dh ] 2700 mm [DW] 700 mm x [dh ] 3000 mm
[High Strength Type]	[High Strength Type]

*\*) In case of total W > 6000 mm, specification may not meet above description*

# VENTILATION DOOR

NEXSTA70VD

## When the Nature Comes Through Your Door



**STRUCTURAL (WIND LOAD)**

1000 Pa  
Deflection L/125



**WATER TIGHTNESS**

50 Pa



**AIR INFILTRATION**

Grade A-2(JIS)



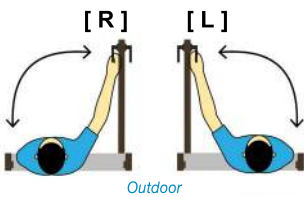
**OPEN-CLOSE TEST**

JIS A 1550  
100,000 Cycles



### Variation

**Single Swing Outswing**



Outdoor



Composite window variation

### Standard Parts

**Lever Handle with Lock**



(Outside) Cylinder key



(Inside) Thumb turn

**Butt Hinge [Aluminium]**



**Double Hung Sliding Lock**



### Optional Parts

**Door Closer**



**Environmental Friendly Design**

Ventilation door is originally design to adopt the Green Building Concept such as Energy Saving by letting the air fresh, enable to maximize the usage of natural lighting and many other points & benefits



Double Hung windows are mounted inside. Allowing ventilation to get fresh air while the door is closed



50 mm open

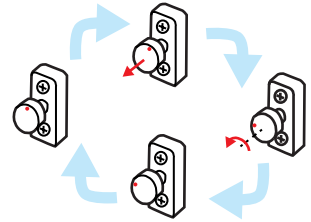
100 mm open

Fully open

- Available 3 locking positions
- In case of none of chosen position, it will automatically lock into closed position

**Safety & Security**

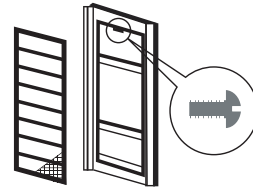
Prevent damage against strong wind, crime at night and insect disturbance



Put hand under the catch & push along the track while pulling the knob

**Easy Maintenance and Operability**

Open the sliding pane, release screw in the center of upper frame from inside, pulling grille upward. For installing, do the procedure in the opposite way



**Product Characteristic**

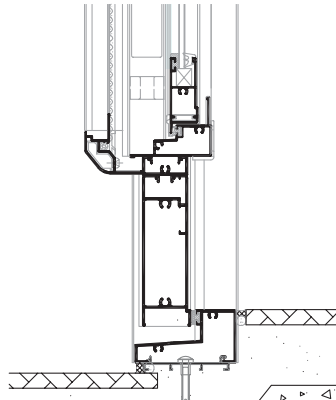
Usage Glass Single Glass 5 mm

SIZE	Min	W 600 mm × h 2000 mm
	Max	W 900 mm × h 2200 mm

**Reliable Performance**

**With Bottom Sill**

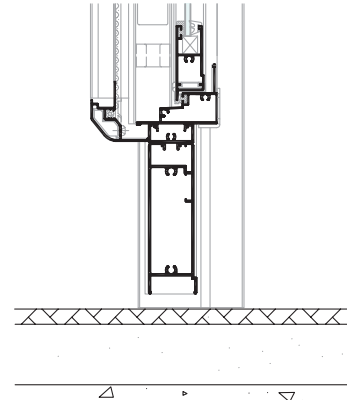
Performance is secured by the Bottom Sill to prevent water and dust leak inside



Provided with Bottom Sill to prevent water and dust leak inside

**Without Bottom Sill**

Water and dust can break in easily

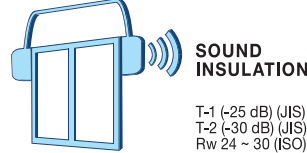
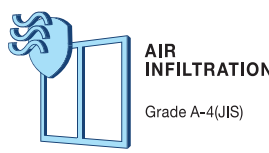
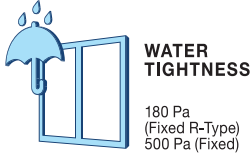
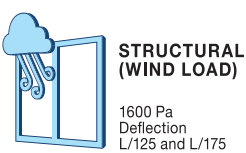


Without Bottom Sill

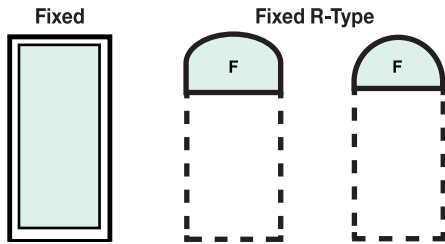
## Fixed

## Fixed R-Type

Fixed Window suits the most discerning taste. All it takes is your imagination and brings them alive with Square, Round-shaped or European style decorative window. The Fixed type has all the beneficial features below whilst the Fixed R-Type boosts its water tightness benefits



### Variation

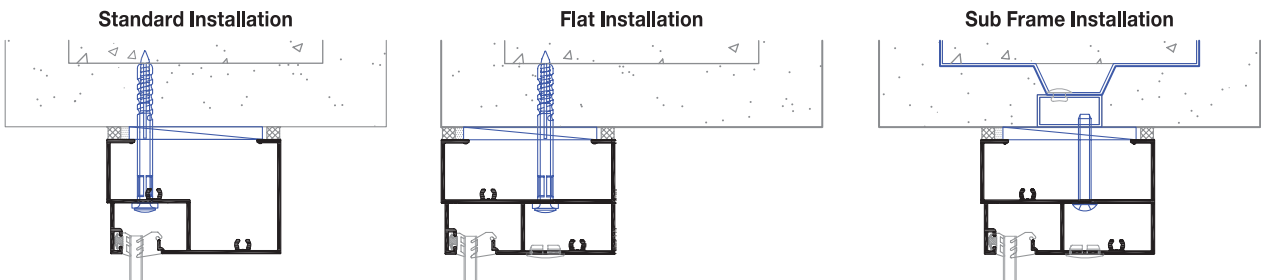


### Detail of Profile Combination



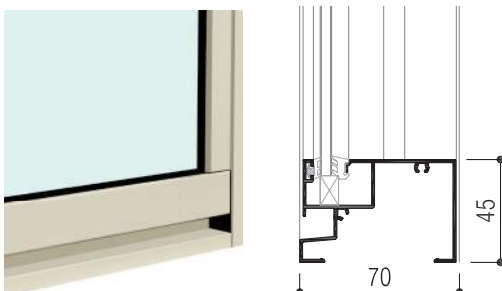
### Design

Flat Installation and Sub Frame Installation are when the window is installed flush with exterior wall or install with sub-frame



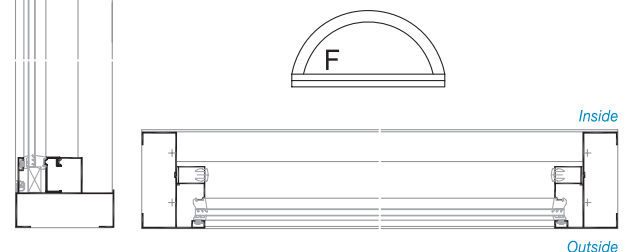
### Relief

Isobaric System is adopted and drain valve is no longer required. Water tightness 500 Pa design improvement



### Flat & Round Design

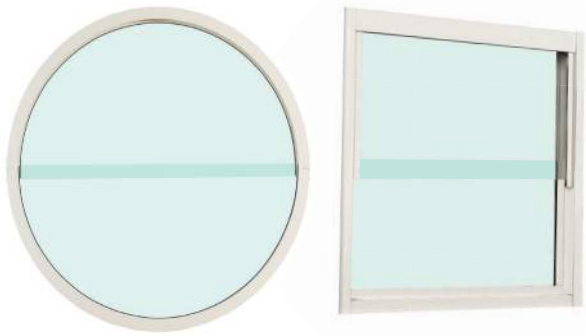
Flat design to simplify set-up. Advanced design to better function. Style meets sensibility thanks to round-shaped





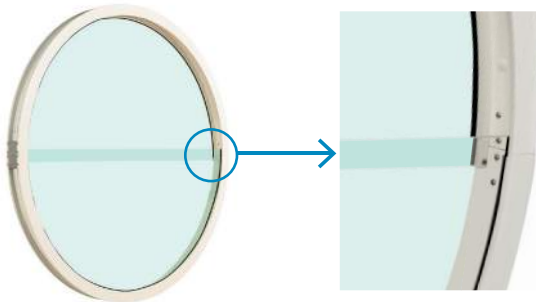
## Bovenlicht

Bovenlicht provides an airy feel and luminous light



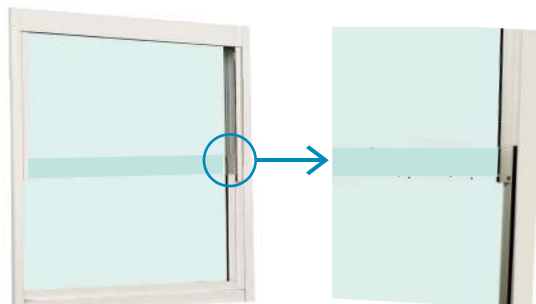
## Ventilation

### Round Type

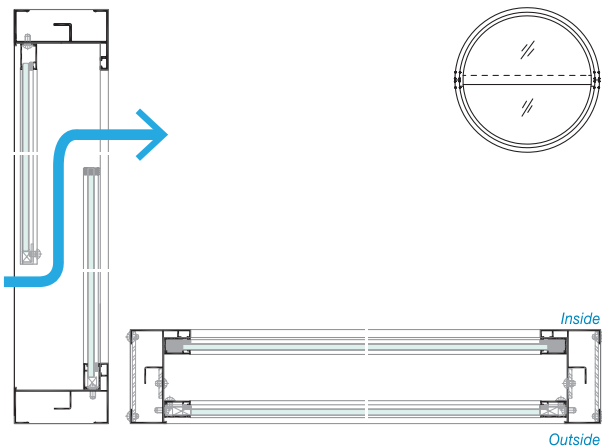


Inside

### Square Type



Inside



Inside

Outside

## Aluminium Louver

Louver brings an additional air circulation and insect screen



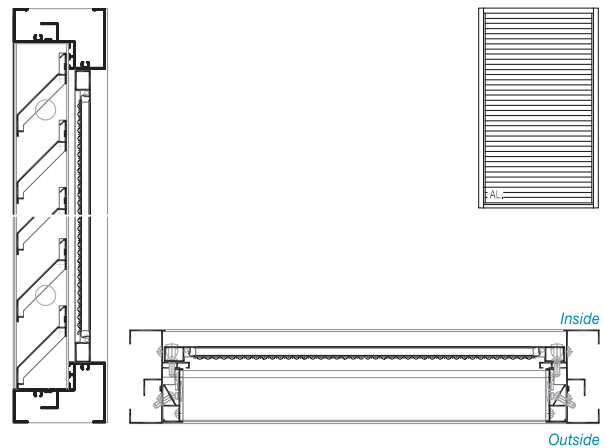
## Detail



Inside



Outside

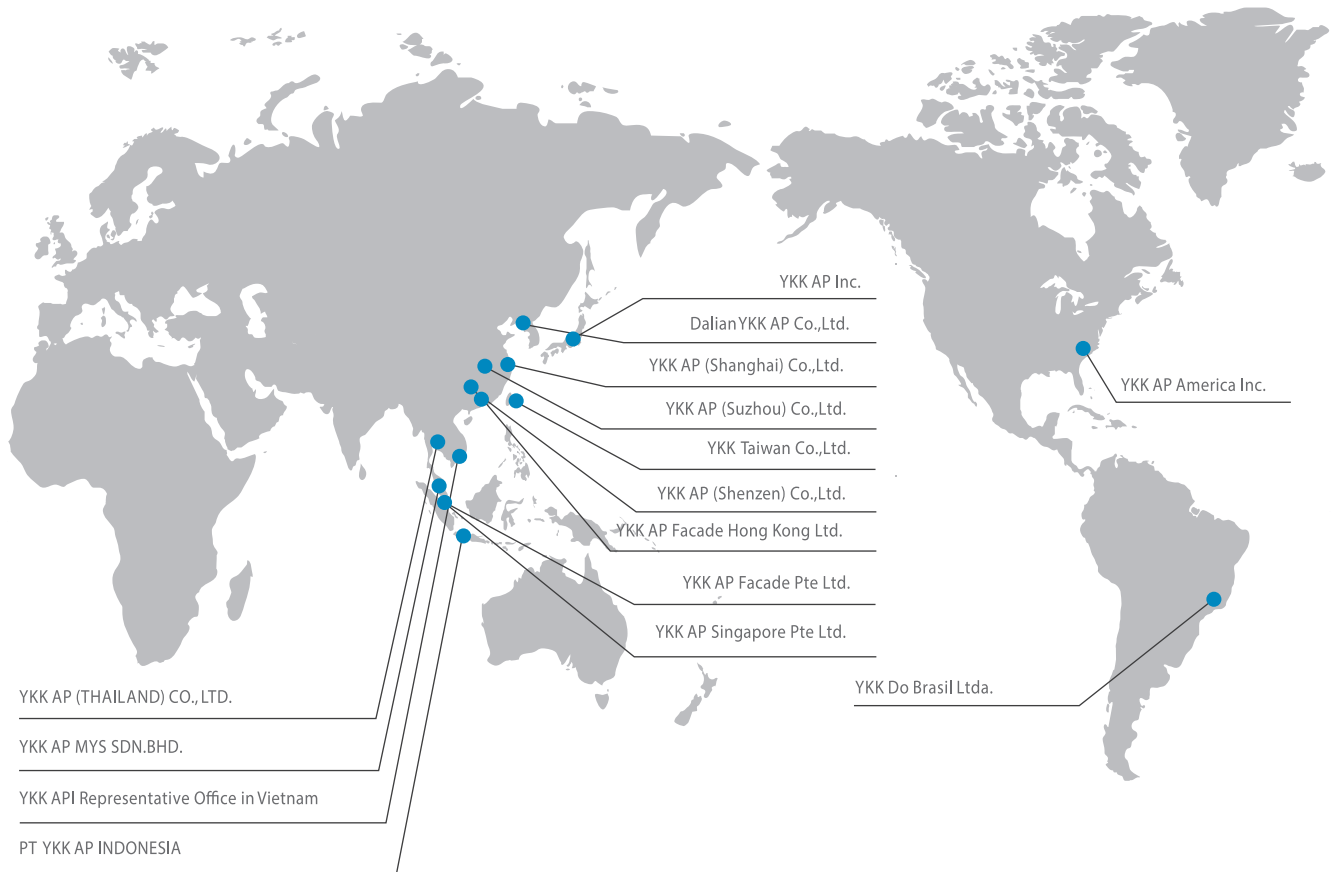


Inside

Outside



# YKK AP GLOBAL NETWORK



## PT YKK AP INDONESIA

### Head Office & Factory

Kawasan Industri Manis  
 Jl. Manis Raya No. 23, Ds. Kadu, Kec. Curug,  
 Tangerang 15810, Banten, Indonesia  
 Tel: +62 21 591 9073 Fax: +62 21 591 9074  
[www.ykkap.co.id](http://www.ykkap.co.id)

### Jakarta Sales & Marketing Office

Panin Dai-ichi Life  
 Jl. S. Parman Kav. 91, 3A Floor,  
 Jakarta 11420, Indonesia  
 Tel: +62 21 569 56333 (Hunting) Fax: +62 21 569 56335

### Surabaya Branch Office

Gedung Bumi Mandiri Tower I, 6<sup>th</sup> Floor  
 Jl. Jend. Basuki Rachmat 129-137,  
 Surabaya 60271, Jawa Timur, Indonesia  
 Tel: +62 31 535 1800 (Hunting) Fax: +62 31 535 1700

### Representative Office in Vietnam

11<sup>th</sup> Floor AB Tower, 76 Le Lai Street  
 Ben Thanh Ward, District 1  
 Ho Chi Minh City, Vietnam  
 Tel: +84 8 3822 8900 Fax: +84 8 3822 8901  
[www.ykkap.com.vn](http://www.ykkap.com.vn)

## YKK AP (THAILAND) CO., LTD.

Wave Place Building, 13<sup>th</sup> Floor No. 55  
 Wireless Road, Lumpini, Pathumwan  
 Bangkok 10330, Thailand  
 Tel: +66 2 655 6334 Fax: +66 2 655 6399  
[www.ykkap.co.th](http://www.ykkap.co.th)

## YKK AP MYS SDN.BHD.

D4-3-5, Solaris Dutamas  
 No. 1 Jalan Dutamas 1,  
 50480 Kuala Lumpur, Malaysia  
 Tel: +60 3 2301 7400 Fax: +60 3 2301 7401  
[www.ykkap.com.my](http://www.ykkap.com.my)



**YKK  
ap**®